

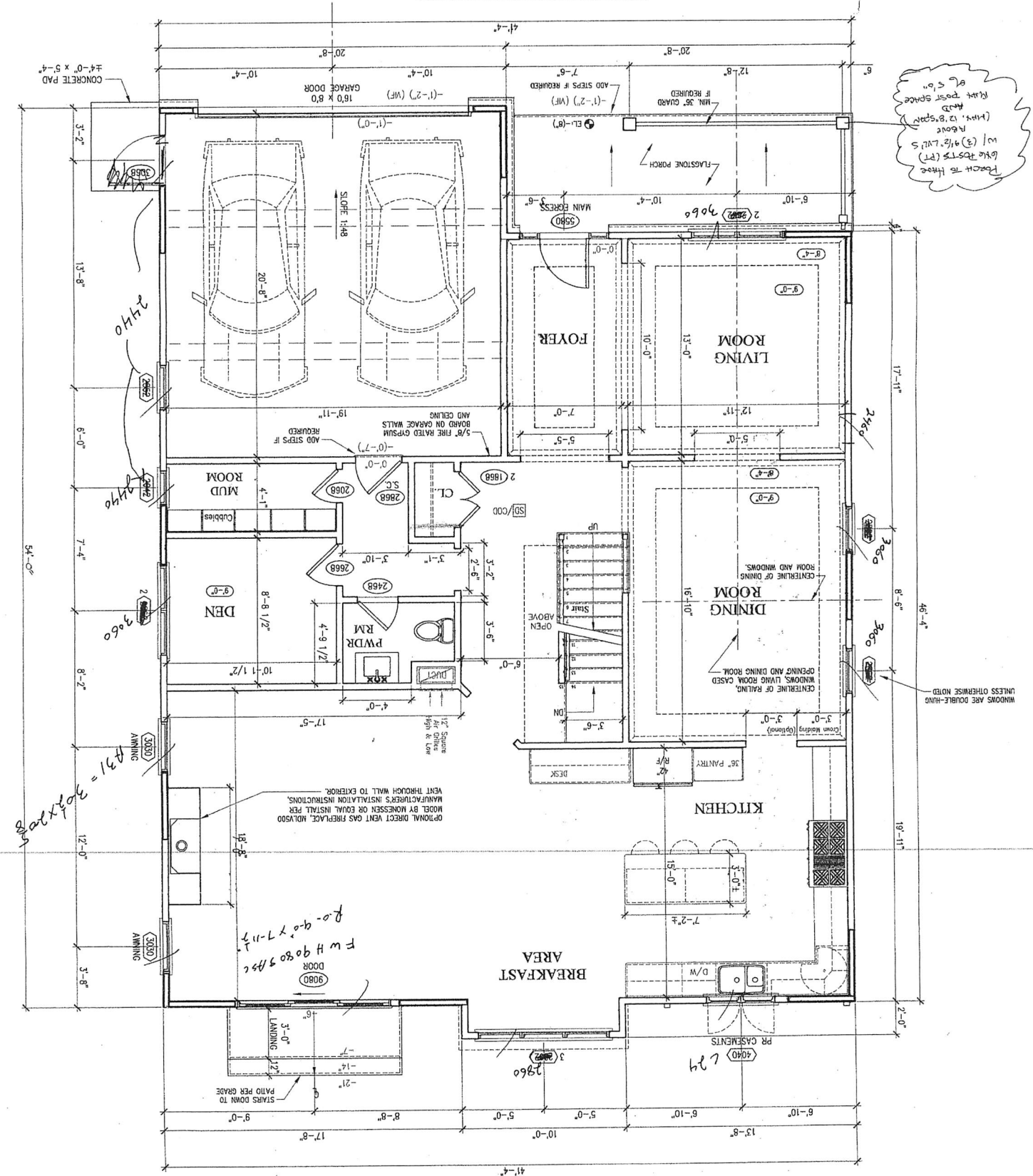
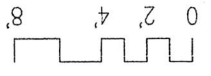
**FIRST FLOOR PLAN**

A2

1st FLOOR = 1,664 SF HOUSE + 430 SF GARAGE = 2,094 GSF ENCLOSED + 145 SF PORCH

FOR FRAMING DIMENSIONS, SUBTRACT 1/2" PER LAYER OF DRYWALL SHEATHING OR MASONRY.

DIMENSIONS ARE TO FINISH FACE OF INTERIOR WALLS, CENTERLINE OF WINDOWS AND FACE OF EXTERIOR

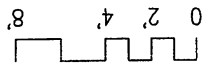


Place to these like posts (PT) (3) 4 1/2" LVL'S about 12' apart (14x12) 12' apart about 12' apart (14x12) 12' apart

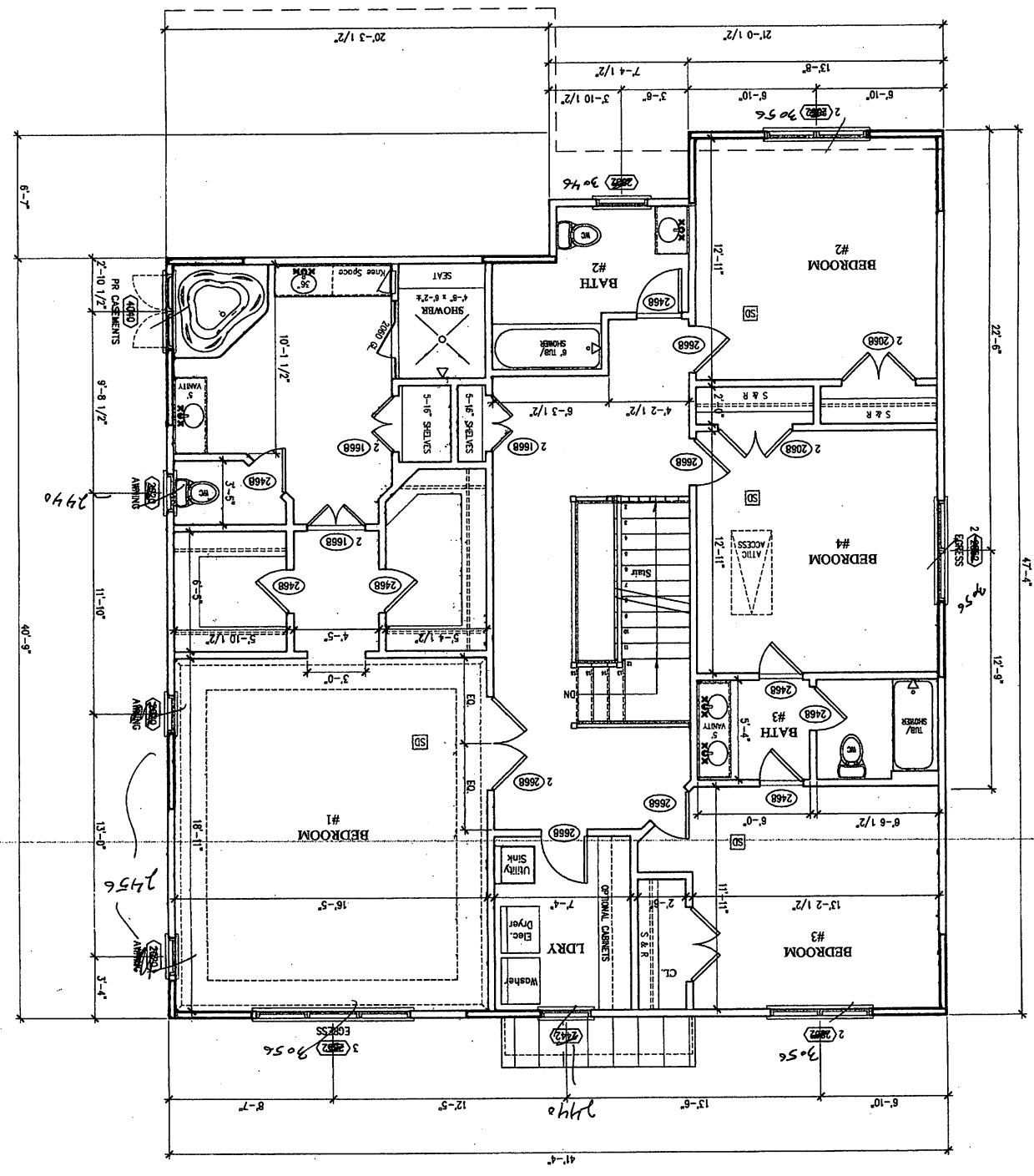
WINDOWS ARE DOUBLE-HAND UNLESS OTHERWISE NOTED

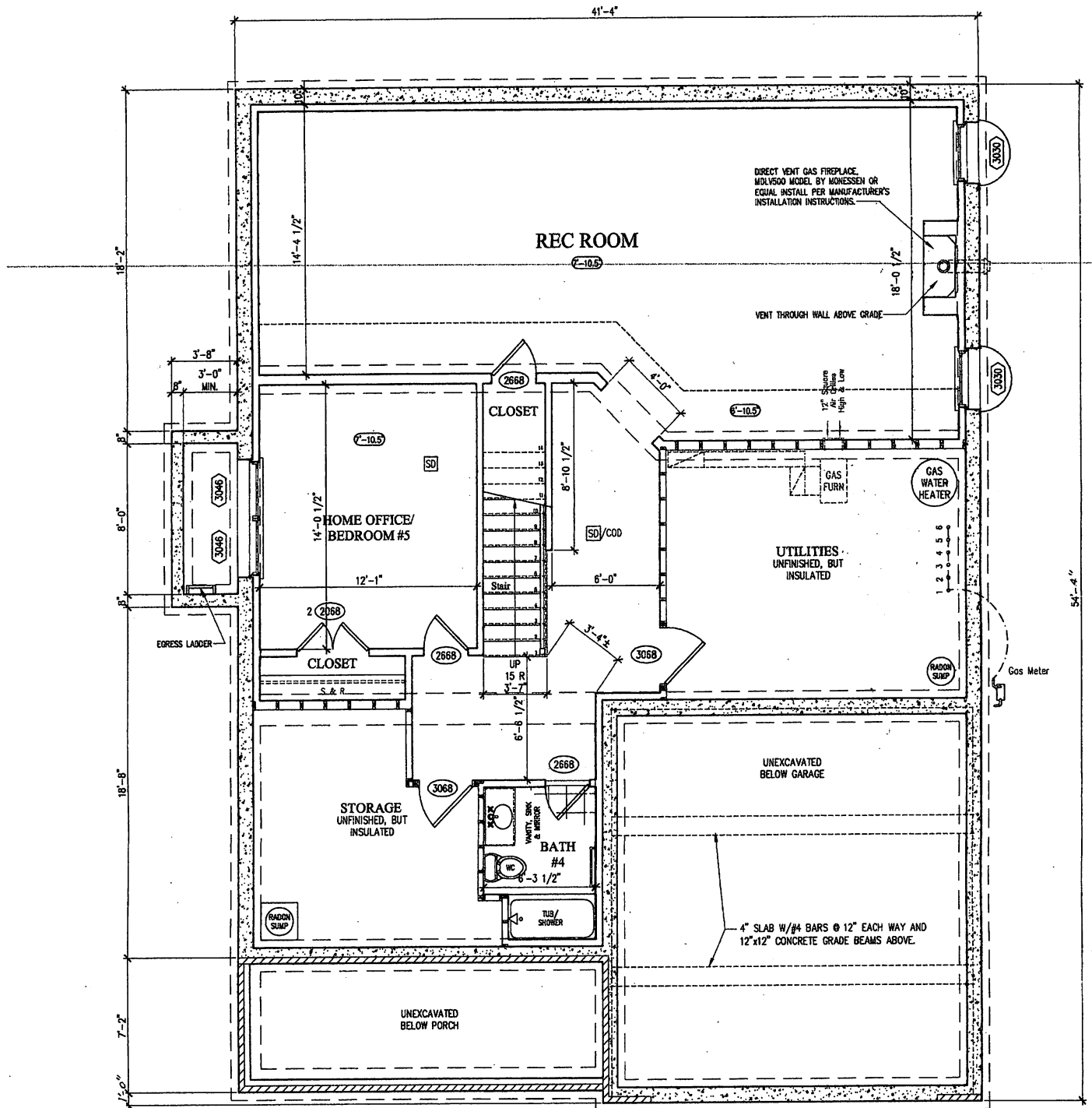
Handwritten note: #31 = 3060 x 2060

Handwritten note: F W H 9080 3490

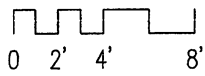


ALL BEARING OPENINGS TO HAVE DOUBLE 2X10 HEADER





ALL BEARING OPENINGS TO HAVE DOUBLE 2X10 HEA



**1 BASEMENT PLAN**  
A1 SCALE: 1/4" = 1'-0"

BASEMENT = 1,655 SF + 163 SF PORCH + 421 SF GARAGE = 2,215 SF FOOTPRINT