



Bethany Lutheran Church

Mission Statement

Reaching out in Worship, Fellowship, Learning, and Love - We Are God's People.

The Chimes



Ice Cream Social!



Our Ice Cream Social was a success! We had more than 175 people in attendance and after expenses we made about \$1,700! Special thank you to everyone who helped with bringing food items, prepping, cooking, set-up, serving, and clean up. Also, thank you to Church Life for overseeing this event! Check out some photos that were submitted by our lovely Pastor Misha, a few pages below!



Bethany Evangelical Lutheran Church

2515 Madison Ave.
Burlington, Iowa
Phone: (319) 752-3621
www.bethanyburlington.org

Our Staff

Rev. Misha McFarland-Pollock, Pastor
Cory Byrne, Choir Director/Organist
Kim Engle, Stephen Ministry Coordinator
Wendy Bell, Office Administrator
Michelle Huppenbauer, Temporary Financial Secretary
Pam Crable, Custodian

September 2024 – Impact of In-Kind Donations

At LSI, in-kind gifts (non-monetary) are just as impactful as financial donations. Director of Philanthropy, Deb Whitford, was inspired by the song “If I Could Dream” by Elvis Presley. She wondered, “What would I dream about for our clients? What would our clients dream for?”

A Story by Deb Whitford:

When is a yardage not just pieces of fabric? In the hands of someone learning to sew, fabric becomes a blank canvas of possibilities. A nearly empty closet containing the few items a refugee could fit in their suitcase when traveling to the US turns into a place of pride when filled with hand-sewn clothes made from that fabric. If I could dream...I dream of curtains for bare windows and cloth to cover worn tables. I dream of the magic of small pieces of fabric fitting into beautiful patterns in quilts to brighten homes and become treasured wraps providing comfort and warmth. These dreams are becoming a reality thanks to the generosity of an LSI donor.

Connie Hansen from Audubon, Iowa, is no stranger to fabric and sewing. Connie has enjoyed sewing for much of her lifetime. In her younger years, she shared her passion for sewing, serving as a 4-H leader in Melville Township, sewing clothes for herself and daughter. Through the years, her love and passion for quilting has grown friendships with others who love the craft. Connie dreamed of keeping her newest neighbors warm with her remaining fabric and donated the yards to LSI. This fabric will be used by our newly resettled immigrant and refugee families to create quilts and clothing, helping them feel more comfortable in their new homes. We hear about dreams every day at LSI from our direct service providers, team members, and clients. Thanks to your generosity, these dreams can become reality.

Help our clients' dreams become reality by donating in-kind gifts to LSI. To learn more, contact philanthropy@LSIowa.org.

For more information, please contact Deb Whitford, LSI's Director of Philanthropy and Church Relations, at Deborah.Whitford@LSIowa.org or 563-676-2065.

Our Mission: Lutheran Services in Iowa responds to the love of Jesus Christ through compassionate service. LSI is an affiliated social ministry partner of the Iowa congregations of the ELCA (Evangelical Lutheran Church in America) and a member of LSA (Lutheran Services in America). We proudly serve people of all ages, abilities, religions, sexes, gender identities, national origins, ethnicities, races, and sexual orientations. Learn more at LSIowa.org and facebook.com/LSI.iowa.





My flesh and my heart may fail, but God is the strength of my heart and my portion forever.
- Psalm 73:26

This has been a very quick summer! I graduated in May, was ordained in May, moved to Burlington in May and my first day as the pastor of Messiah and Bethany began June 3rd! I went to New Orleans to be one of the Youth Gathering chaplains. Then airline issues kept us there an extra two and a half days. I had a funeral a day and a half after I returned from New Orleans. Then I was off for continuing education and to be a plenary speaker for CWTA (Conference for Worship, Theology, and the Arts) at St. Olaf College. To view my plenary here is the link: <https://www.stolaf.edu/multimedia/play/?e=4765> My talk is in the middle of the session.

August began and with that came the kickoff for The Jordan Project where I spent 3 days in Des Moines at Grand View University. Less than half an hour after returning home from Des Moines, I was at Bethany to welcome people to the Ice Cream Social! It was very well attended, and I met so many people from the community. It was great to see people from both Bethany and Messiah in attendance!

Another very exciting and happy thing happened at the end of July - new carpet was put in at the parsonage! I am so very thankful to everyone for the new carpet. I am able to breathe normally again. I no longer have a full body itch. My eyes aren't gummy, and my voice has returned to normal. My sneezing and coughing are gone. I don't need my rescue inhaler daily anymore. It is truly wonderful to feel healthy again! Thank you all so much! Bruce and I are very grateful.

September is right around the corner and that means fall and fall activities. Sunday School will soon return. Choirs will resume. Confirmation will begin. School will be in session. Our lives will become even busier than they currently are. With the excitement and newness along with some familiarity comes the need for extended grace with ourselves and one another. It is sometimes hard to get back into the rhythm of school and work life. Sleep schedules have to be figured out and adjusted too. Early mornings are even earlier. More activities are added to our already full schedules. So, grace will be our theme this fall - grace for others around us, grace for ourselves, grace for all.

I am already looking ahead to Advent (which is one of my favorite times of the church year)! More information will be available later this fall.

Please keep Bruce in your prayers as he begins his internship in Sioux City, IA. He already misses you all. I promise to keep you updated on his internship experience.

May God's promises guide and sustain us during this season of busyness.

Pastor Misha

Meetings

The meetings for September, 2024 that have been scheduled as of the publishing of this newsletter are listed below. Watch your bulletins for any date and time changes, or additional meetings that may be scheduled.

Finance Committee
Thursday, Sept. 12 @ 6:30 p.m.

Executive Committee
Thursday, Sept. 12 @ 6:00 p.m.

Church Life Committee
Sunday, Sept. 8 @ 10:15 a.m.

Property Committee
Monday, Sept. 9 @ 6:30 p.m.

Church Council
Wednesday, Sept. 18 @ 6:30 p.m.

Men's Breakfast
Saturday, Sept. 21 @ 8:00 a.m.

Church Outreach
Sunday, Sept. 1 @ 10:15 a.m.

FINANCIAL UPDATE

July/August ATTENDANCE

July 7	62
July 14	48
July 21	55
July 28	72
August 4	56
August 11	52
August 18	59
August 25	56

July/August GIVING

July 7	\$1,907.30
July 14	\$1,387.00
July 21	\$1,299.00
July 28	\$3,710.50
August 4	\$2,102.50
August 11	\$1,687.60
August 18	\$2,088.80
August 25	\$2,333.40
Total	\$16,516.10

July VANCO total: \$1,630



PLEASE NOTE

Because of Federal Privacy laws, if you or a member of your family are hospitalized and would like the Pastor to visit, you must contact the church and let us know.

LAY LEADERS

September

September Usher: Susan Swanson

Communion Assistants

- 1 - Mike Hopp; Julie Wischmeier
- 8 - Steve & Sue Rogers
- 15 - Teresa Morehead; Bill Mundt
- 22 - Scott & Jan Creighton
- 29 - Jim & Sharon Martindale

Lector

- 1 - Bill Mundt
- 8 - Judy Craven
- 15 - Vicki Stoller
- 22 - Mike Hopp
- 29 - Ron Kastner

Greeters

- 1 - Sharon Martindale
- 8 - Ginny Mesecher
- 15 - Carol Dodge
- 22 - Mark & Bonnie Rosenberg
- 29 - Dan & Julie Wischmeier

Flowers

- 1 - Carol Dodge
- 8 - Susan Swanson
- 15 - Dan Wischmeier
- 22 - Lynda Johnson
- 29 - Bev Sherbondy

Missionary Support

- 1 - Open
- 8 - Open
- 15 - Open
- 22 - Open
- 29 - Open

Altar Guild

- Deb Hoxie
- Carol Dodge



Ice Cream Social Photos!



Ice Cream Social Cont'd.



Announcements



All are welcome to come and have fun in celebrating Pat and Kelli Reichelt's 40th Wedding Anniversary and Kelli's 60th Birthday. The party will be held on Sunday, September 1st from 1:00pm-4:00pm in the fellowship hall at Bethany Lutheran. Please RSVP to Pat at 319-208-4557. Hope to see you there!

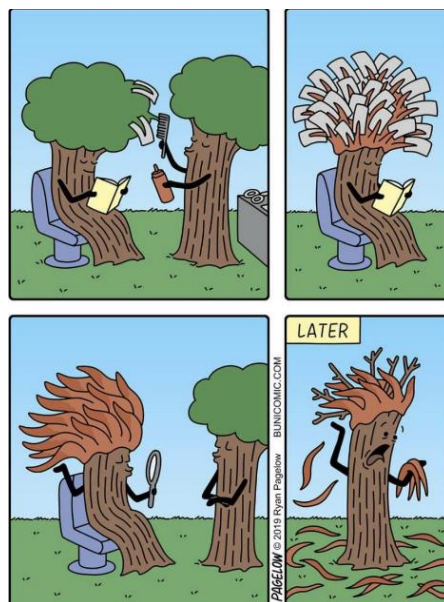
The Office will be closed in observance of Labor Day on Monday, September 2. Office hours will resume on Tuesday, September 3.

Bible Study is back! Bible study will now be on every Thursday morning at 9:30am at Messiah Lutheran Church in the Conference Room, starting on Thursday, September 5!

There will be a joint service at Messiah Lutheran Church on Sunday, September 8th in honor of "Rally Day"! 9:15am will start with Sunday School & Adult Education, for anyone who would like to join, and Worship starts at 10:30am! A Potluck Picnic will follow the service! Please bring a dish to share!

There will be the Special Elections on Tuesday, September 10. Bethany will be open from 7am-8pm for voters to attend.

Church Outreach will have the hat and mitten tree up mid-September and the annual bike drive will start late September. Stay tuned for more information at a later time!





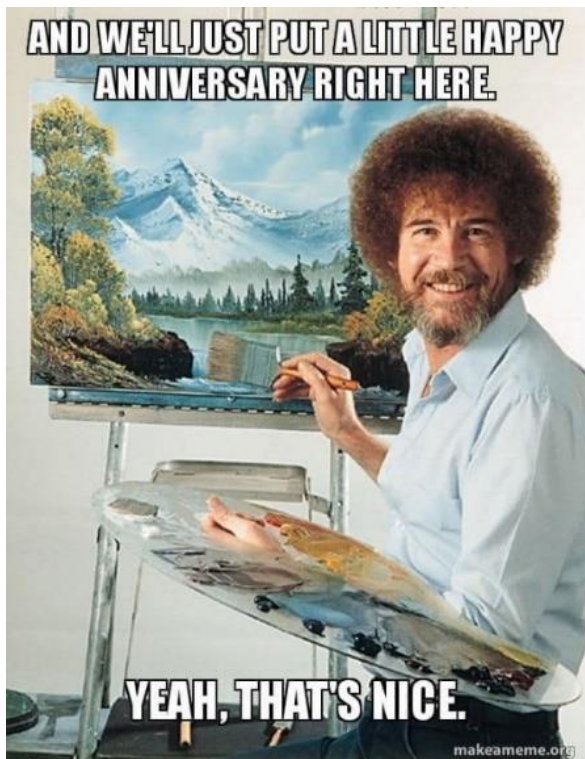
September Anniversaries

- 11 - Gerald & Lila Janssen
- 14 - Drew & Sheri McCarthy
- 19 - Brian & Lori Rosenberg
- 26 - Darrin & Christine Timberlake



September BIRTHDAYS

- 2 - Elaine Loots; Matthew Miller; Jennifer Ward
- 4 - Tyler Burch
- 7 - Mark Loots
- 10 - Malissa Schoof
- 11 - Erin Taylor
- 12 - Myrna Zabloudil
- 13 - Carol Gard; Austin Timberlake
- 14 - Sara Sladky; Victoria Stoller
- 19 - Robert Staub
- 22 - Lynda Johnson
- 24 - Lucas Chelf; Jessica Tharp
- 25 - Emmerich Adam; Dan Harken; Samuel Morehead; Elizabeth Roy; Susan Swanson
- 26 - Patricia Chacey; Ruth Harken
- 27 - Julie Etchison
- 29 - Ken Shepherd
- 30 - Jeffrey McClurg





September 2024



Sunday	Monday	Tuesday	Wednesday	Thursday	Friday	Saturday
<p>1 15th Sunday after Pentecost 9:00 am Worship 10:15 am Church Outreach 10:55 am Hope Service <i>1pm-4pm Pat & Kelli Reichelt's 40th Anniversary & Kelli's 60th Birthday Party!</i></p>	<p>2 </p>	<p>3</p>	<p>4</p>	<p>5 Bible Study @ 9:30am @ Messiah Lutheran</p>	<p>6 Nurses mtg @ Noon</p>	<p>7</p>
<p>8 16th Sunday after Pentecost <i>Joint Service for "Rally Day" @ Messiah Lutheran Church</i> 9:15am Sunday School & Adult Education 10:30am Worship! <i>Potluck to follow service</i></p>	<p>9 Retired School Personnel mtg @ Noon Property mtg @ 6:30pm</p>	<p>10 Special Elections 7am-8pm</p>	<p>11</p>	<p>12 Bible Study @ 9:30am @ Messiah Exec. Comm. Mtg @ 6:00 pm Finance mtg @ 6:30pm</p>	<p>13</p>	<p>14 </p>
<p>15 17th Sunday after Pentecost 9:00 am Worship 10:55 am Hope Service</p>	<p>16 </p>	<p>17</p>	<p>18 Council Mtg @ 6:30 pm</p>	<p>19 Bible Study @ 9:30am @ Messiah Lutheran</p>	<p>20 Chimes Deadline</p>	<p>21 8am Men's Breakfast</p>
<p>22 18th Sunday after Pentecost 9:00 am Worship 10:55 am Hope Service</p>	<p>23</p>	<p>24</p>	<p>25</p>	<p>26 Bible Study @ 9:30am @ Messiah Lutheran</p>	<p>27</p>	<p>28 </p>
<p>29 19th Sunday after Pentecost 9:00 am Worship 10:55 am Hope Service</p>	<p>30 </p>			<p></p>		<p>Paraments: Green: 1, 8, 15, 22, 29</p>