

Wheel Flange Lubrication Applicator **Installation Instructions**

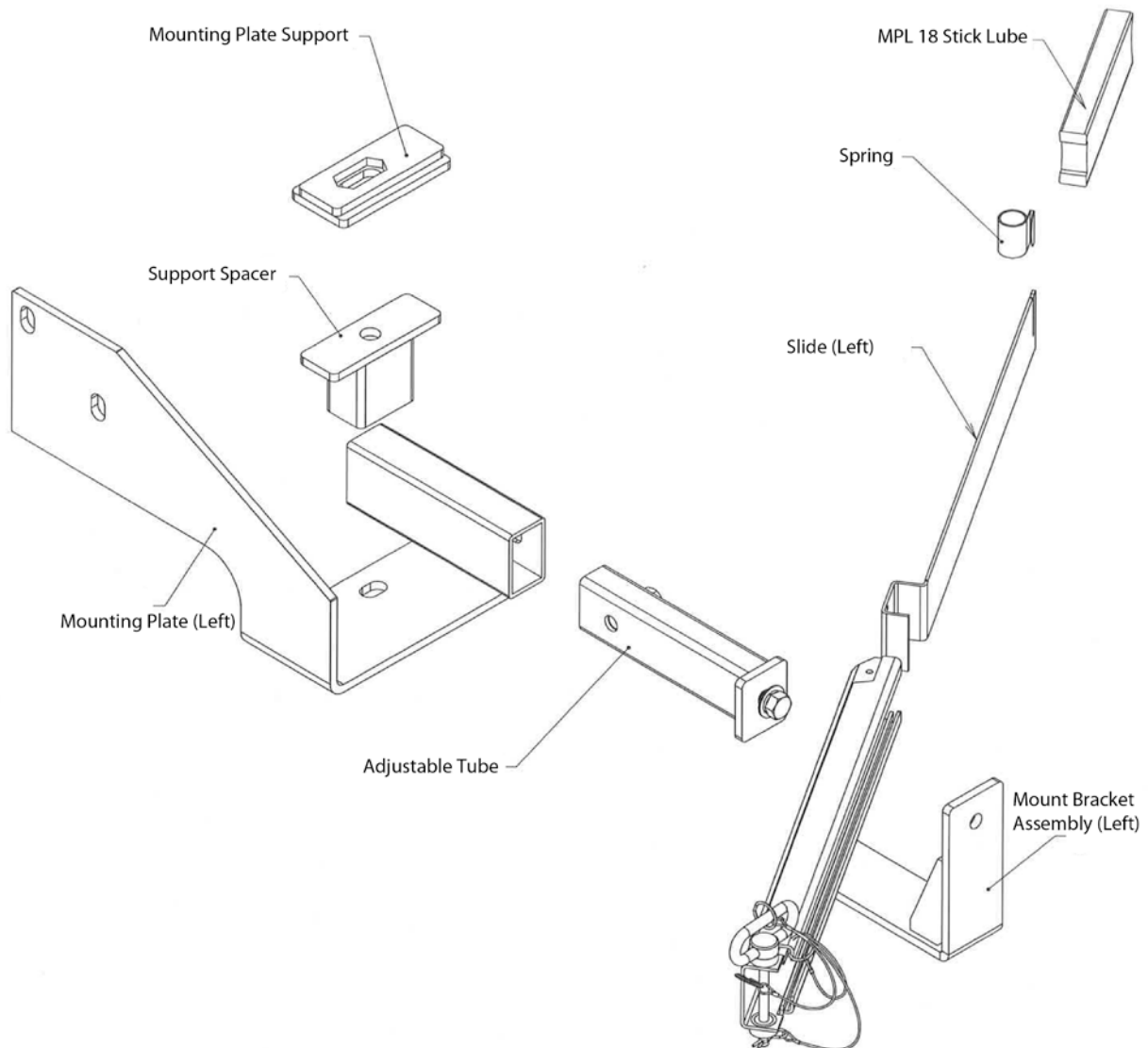
MPL 7070
SD70ACe Locomotive with Steerable Trucks



Overview

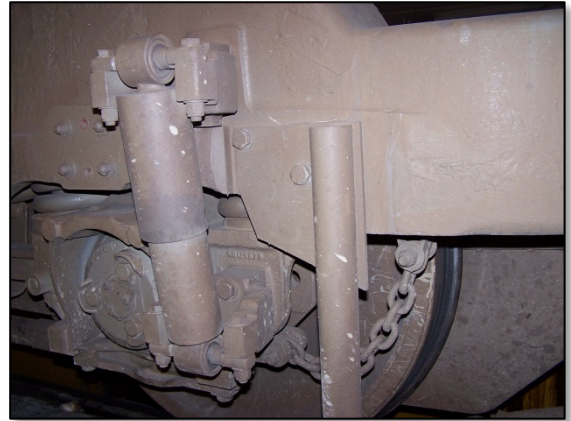
The lubrication applicators are designed to be installed on each side of the third and fourth axles on the locomotive. The applicators consist of a mounting plate which bolts to the truck frame, a mounting plate support and support spacer which also attach to the truck frame, and adjustable tube for alignment purposes and the mount bracket assembly which contains the slide, spring and stick. Also included is the mounting hardware consisting of:

- (1) $\frac{3}{4}$ " – 10 x 6.5", GR5 ZNC hex bolt
- (2) $\frac{3}{4}$ " -10 x 2.25", GR5 ZNC hex bolt
- (1) - dimple lock nut $\frac{3}{4}$ " – 10 GR5 ZNC
- (3) $\frac{3}{4}$ " flat washers ZNC



Installation

1. Lubrication applicators will be installed on each side of the 3rd and 4th axles. This would be behind the 3rd in front of the fuel tank and in front of the 4th axle behind the fuel tank.



2. Check the underside of truck frame around the 4 inch hole for any irregularities. If needed, grind off any areas so that spacer fits flat on surface inside the frame.



3. Insert 6.5" bolt in the mounting plate support and insert it through the 4 inch hole. Ensure that the head drops into the locking tabs on top of the support piece.



4. Install the support spacer and mounting bracket by sliding the support spacer over the 6.5 inch bolt. Then slide the mounting bracket over the bolt and attach the flat washer and locking nut. Secure the mounting plate to the frame using a 4" dowel.



5. Reinstall sand pipe mounting plate and remove upper dowel. Install the 2.25 inch bolt and flat washer into the upper hole and tighten. Remove lower dowel, insert remaining 2.25 inch bolt and flat washer and tighten.
6. Attach the mount bracket to the adjustable tube and tighten using provided hardware. Install adjustable tube into the mounting bracket.



7. Adjust the magazine by sliding the adjustable tube in towards the wheel until it is $\frac{1}{2}$ to $\frac{3}{4}$ inch from the tread of the wheel and then tighten bolt on the side of the tube/mounting bracket.
8. Slide the lube stick into the magazine. Apply the spring to the slide and push into the magazine. Install the pin and keeper. Ensure that the stick is centered in the throat of the flange once the adjustable tube has been tightened.



NOTE: The spring should be installed on the slide with the slot in the upward position and should roll out when pushed into place.



Additionally: *On early locomotives built with the safety chain brackets towards the outside of the truck frame, reverse the bolt if necessary so that the bolt head is outward. This will clear the mounting bracket and allow the clamping bolt to line up in the 4 inch casting hole on the bottom side of the truck frame.*