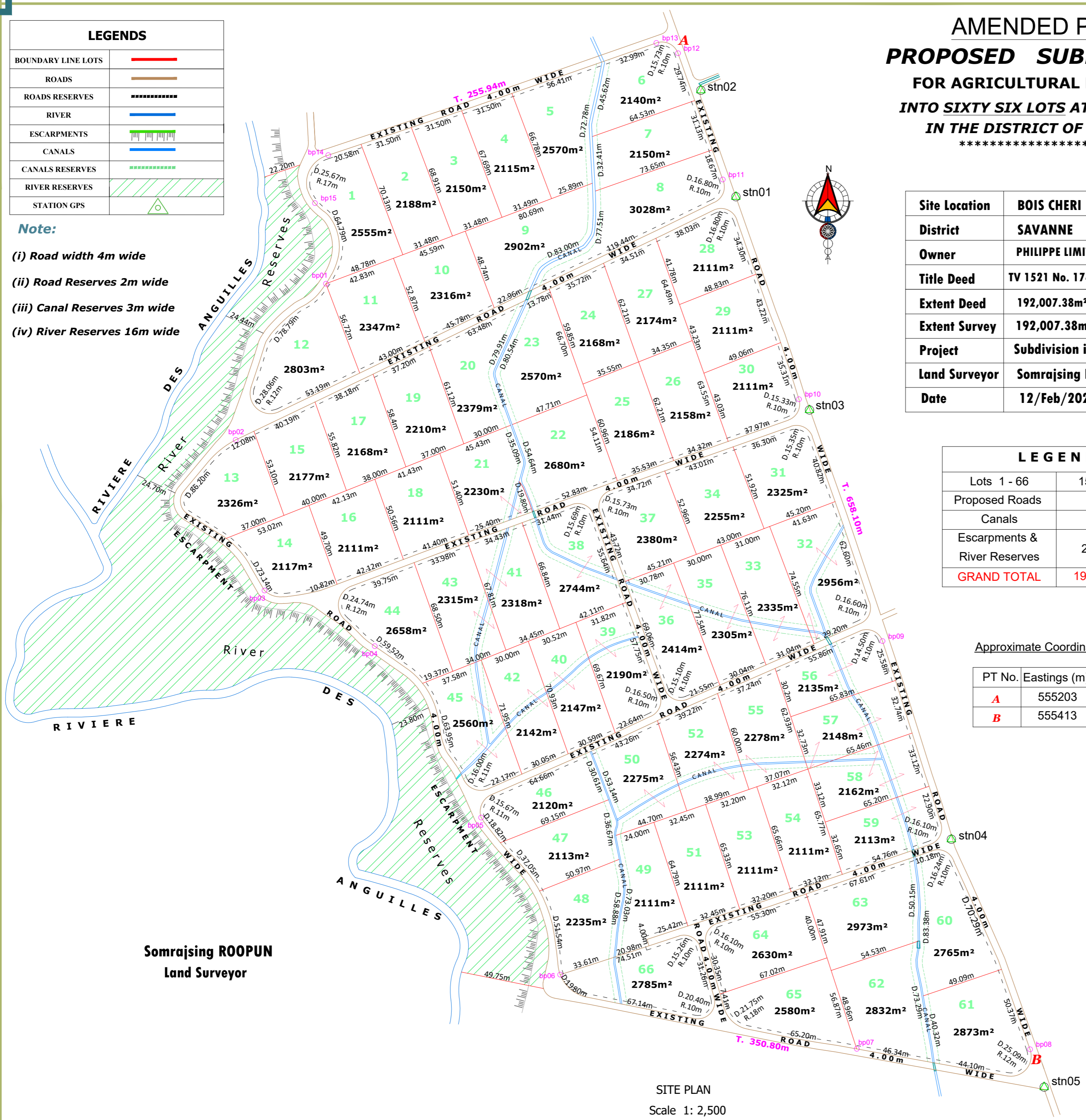


AMENDED PLAN PROPOSED SUBDIVISION FOR AGRICULTURAL PURPOSES INTO SIXTY SIX LOTS AT BOIS CHERI IN THE DISTRICT OF SAVANNE

Approximate Centroid Coordinates (UTM40S)
555130mE 7740483mN

LEGENDS	
BOUNDARY LINE LOTS	
ROADS	
ROADS RESERVES	
RIVER	
ESCARPMENTS	
CANALS	
CANALS RESERVES	
RIVER RESERVES	
STATION GPS	

- Note:**
- (i) Road width 4m wide
 - (ii) Road Reserves 2m wide
 - (iii) Canal Reserves 3m wide
 - (iv) River Reserves 16m wide

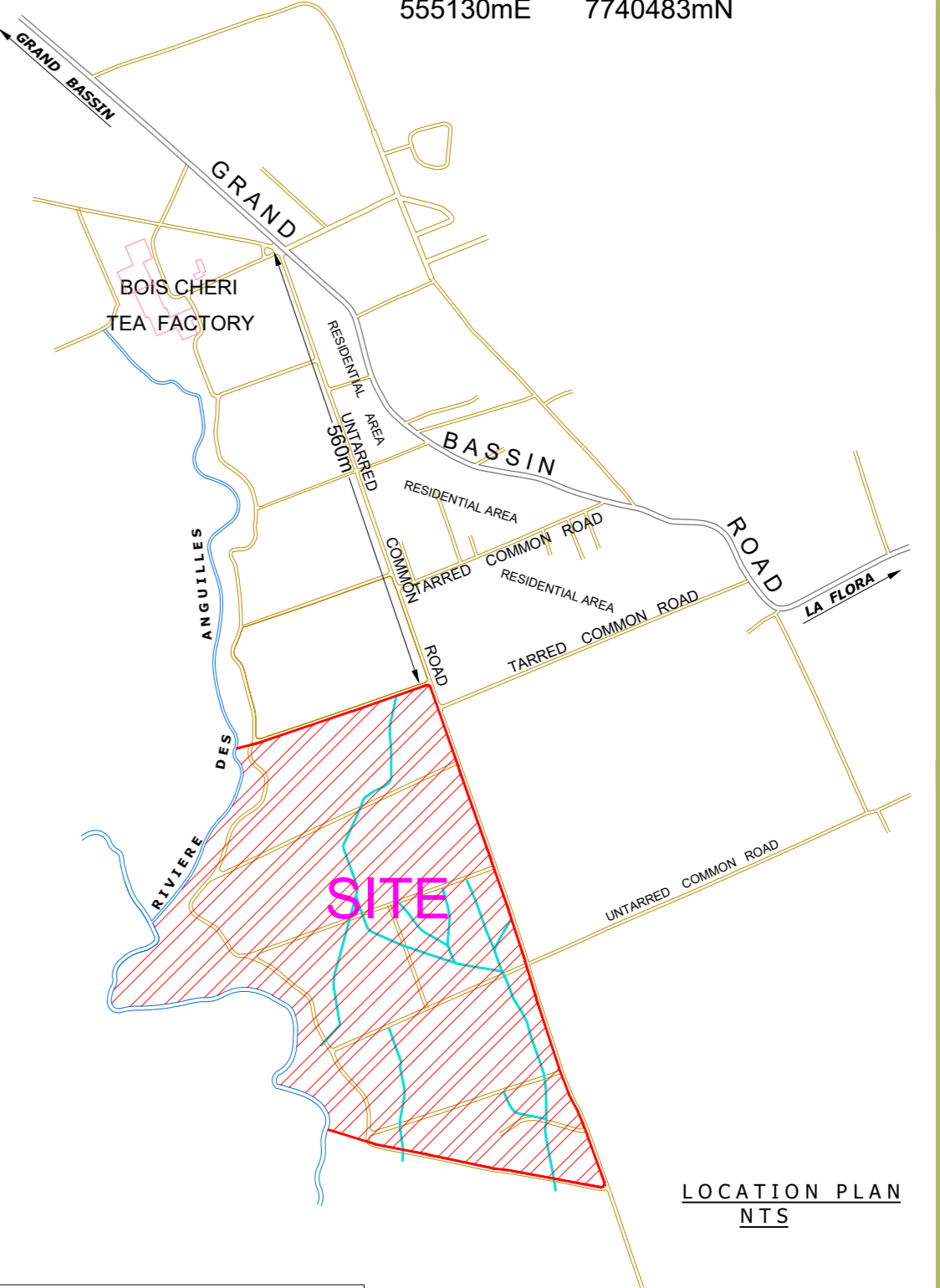


Site Location	BOIS CHERI
District	SAVANNE
Owner	PHILIPPE LIMITED
Title Deed	TV 1521 No. 174 & 3428 No. 45
Extent Deed	192,007.38m ² or 45A49PS
Extent Survey	192,007.38m ²
Project	Subdivision into 66 lots
Land Surveyor	Somrajsing ROOPUN
Date	12/Feb/2020

LEGENDS	
Lots 1 - 66	155,141.00m ²
Proposed Roads	7,957.00m ²
Canals	658.00m ²
Eскарпments & River Reserves	28,251.38m ²
GRAND TOTAL	192,007.38m²

Approximate Coordinates (UTM 40S)

PT No.	Eastings (m)	Northings (m)
A	555203	7740766
B	555413	7740165



LOCATION PLAN
NTS

Somrajsing ROOPUN
Land Surveyor

SITE PLAN
Scale 1: 2,500

Boundary Coordinates		
Point	Easting (m)	Northing (m)
bp01	246098.803	332681.484
bp02	246045.142	332588.743
bp03	246062.215	332499.271
bp04	246127.722	332466.223
bp05	246190.947	332364.425
bp06	246237.842	332271.113
bp07	246414.048	332227.066
bp08	246516.932	332226.799
bp09	246429.282	332469.206
bp10	246379.703	332612.892
bp11	246334.409	332743.369
bp12	246307.829	332818.334
bp13	246295.027	332824.466
bp14	246100.139	332757.800
bp15	246092.181	332729.378

List of Control Points in LGM2012

Stations Coordinates		
Station	Easting (m)	Northing (m)
stn01	246342.262	332733.148
stn02	246321.429	332796.371
stn03	246385.965	332606.455
stn04	246470.217	332351.533
stn05	246525.327	332204.349

Note: Survey Method Used: Static GPS Survey using STP 25 (Grand Bassin) as control point
Observation Time: 30 mins simultaneous observation between STP25 and Stn01