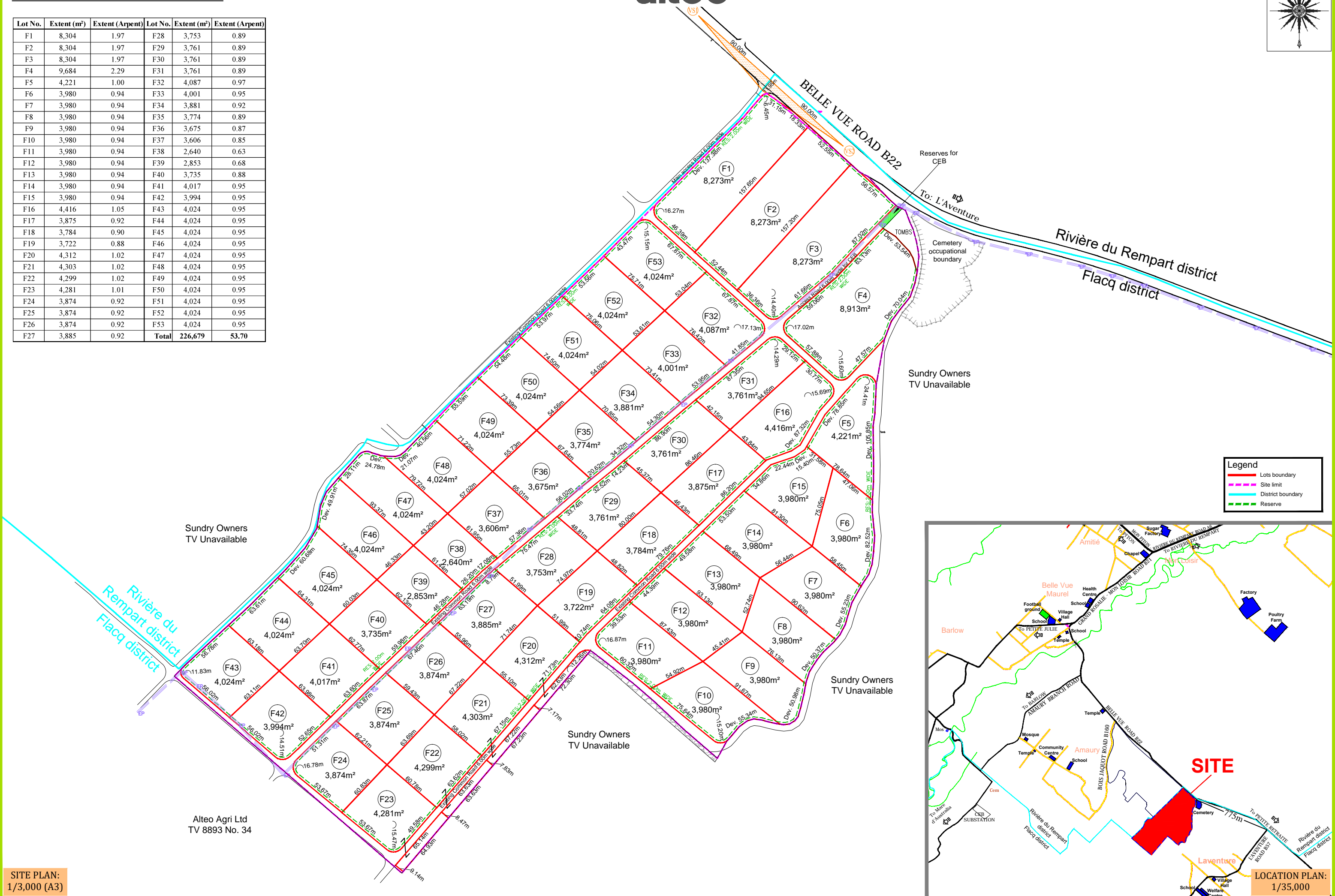


Morcellement Agricoles

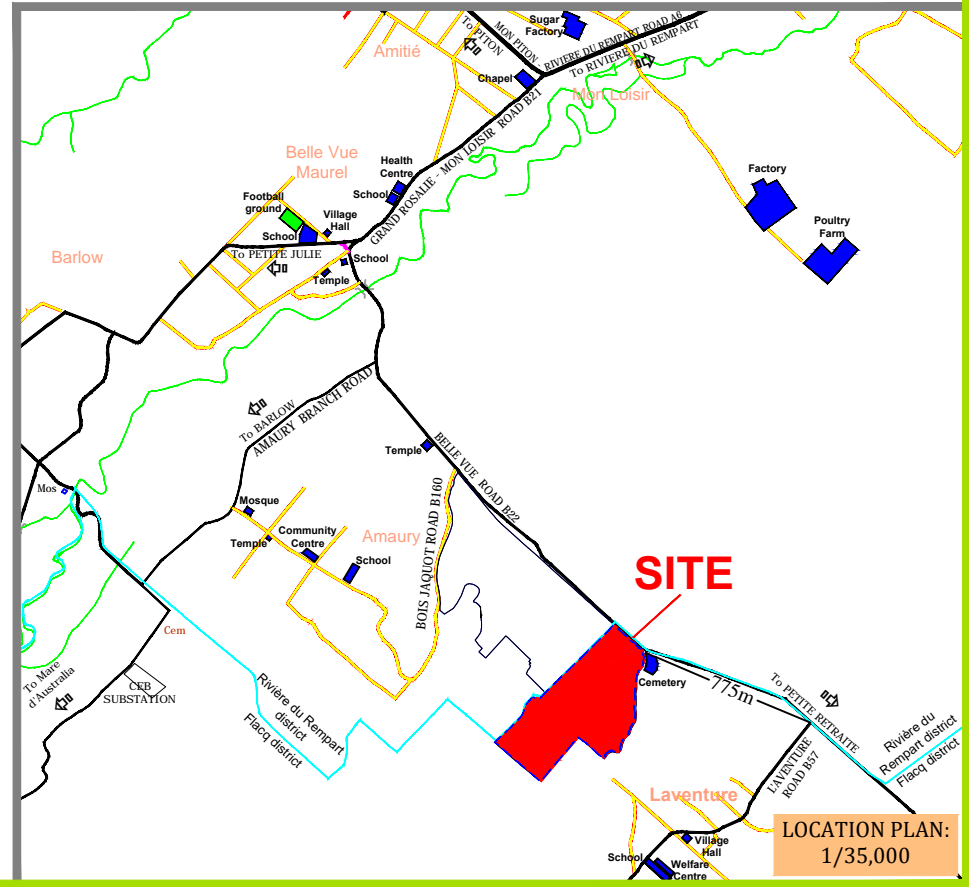


Lot No.	Extent (m ²)	Extent (Arpent)	Lot No.	Extent (m ²)	Extent (Arpent)
F1	8,304	1.97	F28	3,753	0.89
F2	8,304	1.97	F29	3,761	0.89
F3	8,304	1.97	F30	3,761	0.89
F4	9,684	2.29	F31	3,761	0.89
F5	4,221	1.00	F32	4,087	0.97
F6	3,980	0.94	F33	4,001	0.95
F7	3,980	0.94	F34	3,881	0.92
F8	3,980	0.94	F35	3,774	0.89
F9	3,980	0.94	F36	3,675	0.87
F10	3,980	0.94	F37	3,606	0.85
F11	3,980	0.94	F38	2,640	0.63
F12	3,980	0.94	F39	2,853	0.68
F13	3,980	0.94	F40	3,735	0.88
F14	3,980	0.94	F41	4,017	0.95
F15	3,980	0.94	F42	3,994	0.95
F16	4,416	1.05	F43	4,024	0.95
F17	3,875	0.92	F44	4,024	0.95
F18	3,784	0.90	F45	4,024	0.95
F19	3,722	0.88	F46	4,024	0.95
F20	4,312	1.02	F47	4,024	0.95
F21	4,303	1.02	F48	4,024	0.95
F22	4,299	1.02	F49	4,024	0.95
F23	4,281	1.01	F50	4,024	0.95
F24	3,874	0.92	F51	4,024	0.95
F25	3,874	0.92	F52	4,024	0.95
F26	3,874	0.92	F53	4,024	0.95
F27	3,885	0.92	Total	226,679	53.70



Legend

- Red line: Lots boundary
- Purple dashed line: Site limit
- Cyan dashed line: District boundary
- Green dashed line: Reserve



SITE PLAN:
1/3,000 (A3)

LOCATION PLAN:
1/35,000