



04/14/24



@agmillworks

Tag us in your installation photos and videos to be featured on our page!

(In-Swing) CONFIG. FROM EXTERIOR

INSTALLATION GUIDE  
PIVOT DOOR  
**FRITSJURGENS SELF CLOSING**



<https://www.fritsjurgens.com/pivot-door-installation-video-manual>

**We suggest prefinishing or prepainting doors before installation.**

This unit will not operate or lock properly if the frame is not

**PERFECTLY PLUMB, LEVEL AND SQUARE.**

**ENSURE THE JAMB IS INSTALLED 100% PLUMB, LEVEL AND SQUARE USING A LASER LEVEL DEVICE, 6' OR 8' LEVEL AND OR A STORY POLE.**

**If a factory service call is requested and the cause of the issue is found to be a unit installed out of square and/or plumb, the service call will be billed to the customer.**

**IMPORTANT:**

**This unit has been engineered to work with the weatherstripping installed on the unit. If weatherstripping must be removed for painting or finishing, please make note of where it goes before removing it. It is the installer's and or painters responsibility to replace all weatherstripping in exactly the same locations as installed by factory. Failure to do so may cause the unit to leak water and air.**

**IMPORTANT: A SILL PAN AND PROPER WATERPROOFING (BY OTHERS) ARE REQUIRED FOR PROPER INSTALLATION OF THIS UNIT FIG 2.**

**These are not step-by-step instructions. Manufacturer assumes no liability for omissions/errors and/or installation errors. Please call the factory if there are any questions 1-800-559-9995**

K.D. Unit (Knocked Down) Assembly  
Instructions are written as viewed from EXTERIOR side of unit

Thank you for ordering a **Pivot Door** from AG Millworks. This unit was completely built-up with all hardware installed in our factory. The unit was fully tested and components were adjusted and then the doors were removed, marked and boxed, and the frame may have been disassembled and boxed. Please contact the factory before making any hardware adjustments.

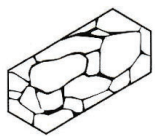
**Please refer to drawings on the following pages for more information.**

1. If the frame was not delivered assembled, assemble and screw together the four sections of the frame: (1) Head Jamb, (2) Jamb legs, (1) Sill using generous amounts of the provided high-quality silicone caulking.
2. Place the frame into the opening and be sure it is **completely plumb, level and square**. Don't forget to apply a minimum of two beads of silicone caulking and/or flashing material to waterproof the unit.

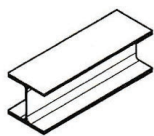
The installer has various options for securing the sill depending on the job site, **e.g. a generous amount of high quality sealant such as OSI Quad Max FIG 1**. However, be sure all products are compatible with one another. Ultimately, the installer needs to determine the best method to prevent the sill from lifting off the subfloor. Secure the frame into the opening **completely plumb, level and square**. See **FIG 2** for basic sill pan information.

### FIG 1: Aluminum Sill

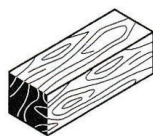
Select the correct drill bit for the floor and determine the drilling depth.



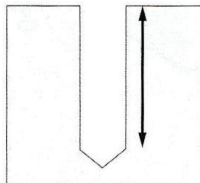
Ø8 mm  
(5/16 ")



Ø8 mm  
(5/16 ")



Ø7.5 mm  
(19/64 ")



30 mm  
(1 3/16 ")

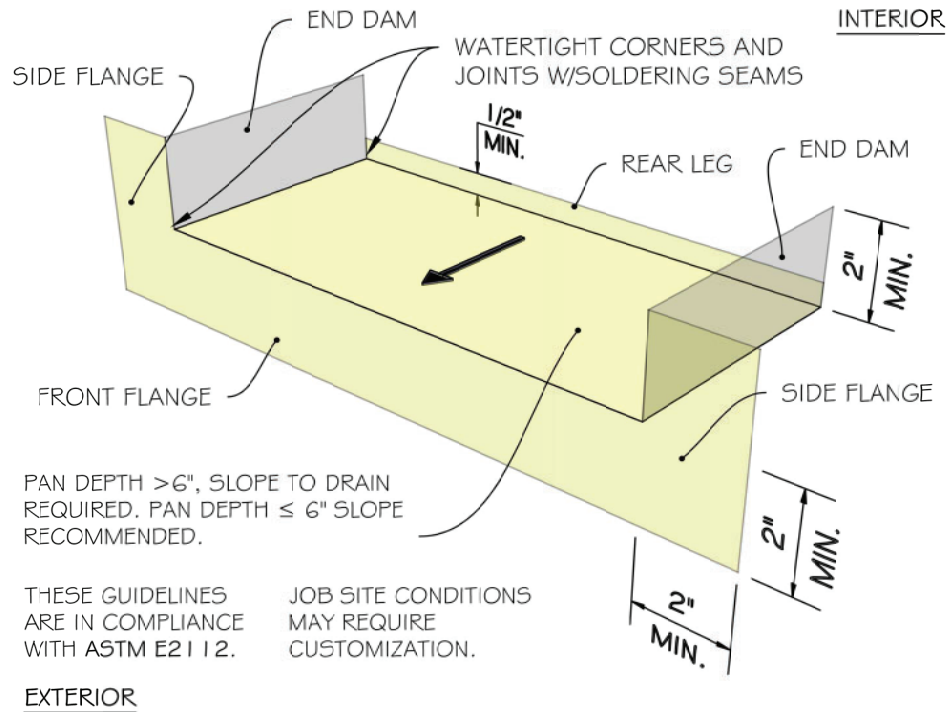


Use the metal template provided and measure the distance of the pins from the edge of the sill to find the placement of the holes in the floor.



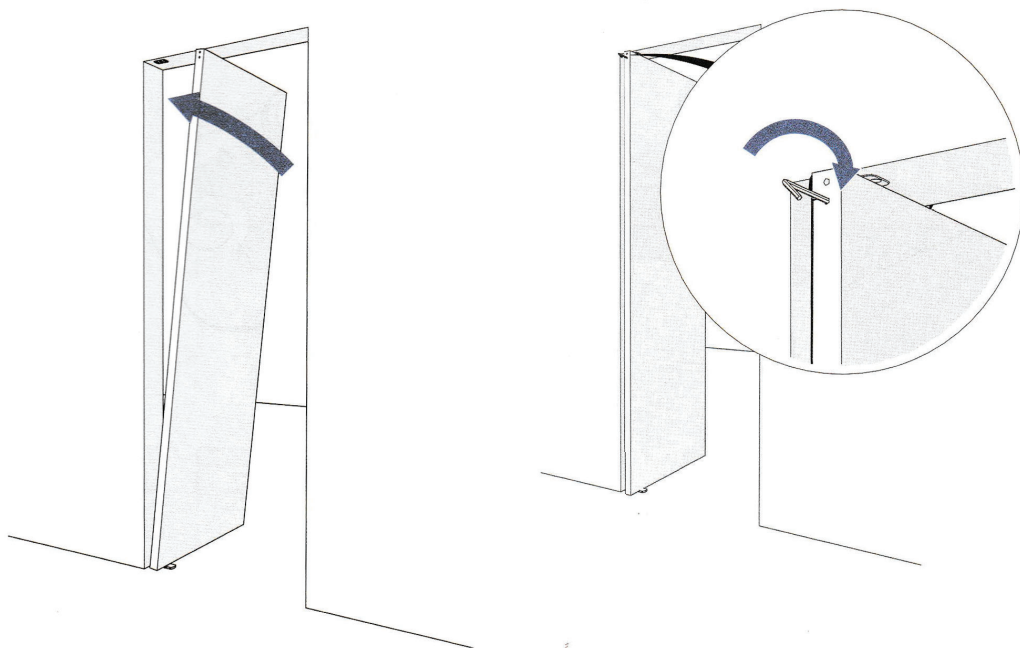
Apply glue to the bottom of the metal plate. Add glue in the holes in the floor. Make sure the holes don't overflow when you place the floor plate.

**FIG 2: Basic Sill**



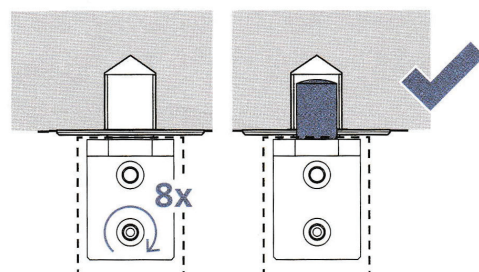
**FIG 3: Mounting Door**

Position the door on the floor plate. Be sure to place the door in its open position, so the oval spindle should be rotated into that direction. Make sure the bottom cam is positioned in the elliptical hole in the floor plate. Align the door with the ceiling plate.



Top pivot 70 mm → Turn the key 8 times.

Extend the pivot with the Hexagon Guide.



Check again to be sure the jamb is **plumb, level and square** before continuing. **ANCHORING THE SILL IS MANDATORY.**

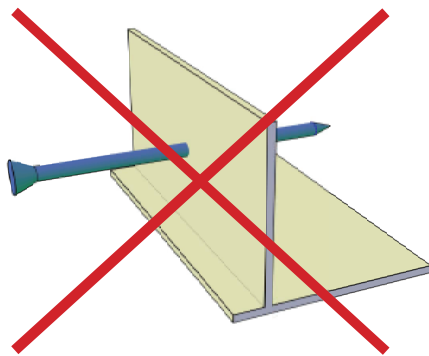
**This unit will not operate or lock properly if the frame is not perfectly plumb, level and square. If a factory service call is requested and the cause of the issue is found to be a unit installed out of square and/or plumb, the service call will be billed to the customer.**

**3.** Test to see if the unit opens and closes smoothly.

**4.** Our flashing fins are non-structural and not intended to be used as an anchoring device or nailing fin **FIG 4.**

If there are any questions during installation, please feel free to call our factory at (805) 644-4494 or 1-800-559-9995 (toll free in USA) between the hours of 8:00 a.m. and 4:30 p.m.

**FIG 4:** Non-structural Flashing Fin



**NON-STRUCTURAL FLASHING FIN.**

**NOT INTENDED TO BE USED AS AN ANCHORING DEVICE OR NAILING FIN.**